

ATICO "B" / PENTHOUSE "B"

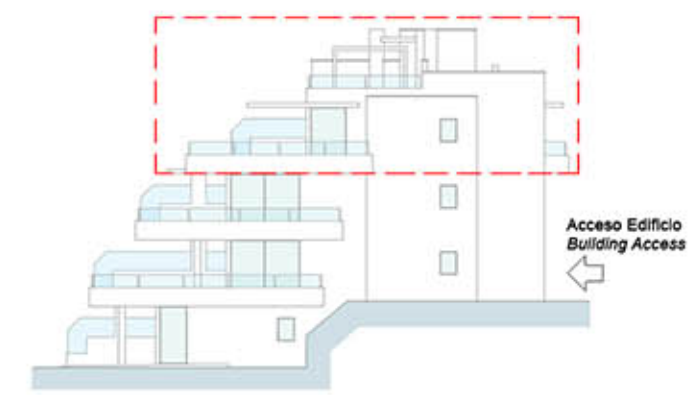
Edificios / Buildings 1-2-3-4

SUP. CONSTRUIDA / BUILT AREA

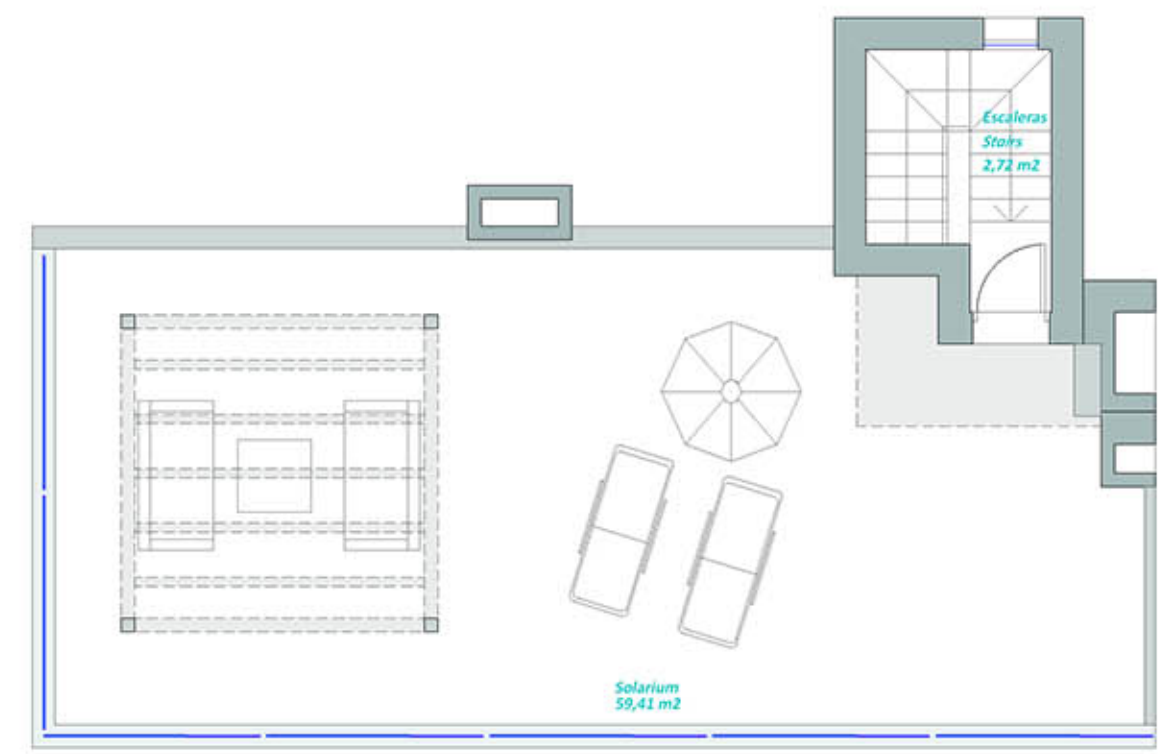
Cerrada vivienda / Built:	133,74 m ²
Terraza / Terrace:	79,87 m ²
Solarium:	65,84 m ²
Comunes / Communal:	15,98 m ²
SUP. TOTAL CONSTRUIDA:	295,43 m²
TOTAL BUILT AREA:	295,43 m²

Sup. Útil según Real Decreto 218/2005: 119,96 m²
 Living area according decree 218/2005:

La superficie mostrada en cada estancia, corresponde a superficie útil.



Pianta inferior / Lower floor



Pianta superior / Upper floor

